



TAI-SAW TECHNOLOGY CO., LTD.

No. 3, Industrial 2nd Rd., Ping-Chen Industrial District,
Taoyuan, 324, Taiwan, R.O.C.

TEL: 886-3-4690038 FAX: 886-3-4697532

E-mail: tstsales@mail.taisaw.com Web: www.taisaw.com

Approval Sheet For Product Specification

Issued Date:

Product Name: SAW Resonator 403.550 MHz SMD 5X5 mm

TST Parts No.: TC0215A

Customer Parts No.: _____

Company: _____
Division: _____
Approved by : _____
Date: _____

Checked by: _____ Asin Lin

Approval by: _____ Francis Chen

Date: _____ 2005/01/13



TAI-SAW TECHNOLOGY CO., LTD.

No. 3, Industrial 2nd Rd., Ping-Chen Industrial District,
Taoyuan, 324, Taiwan, R.O.C.

TEL: 886-3-4690038 FAX: 886-3-4697532

E-mail: tstsales@mail.taisaw.com Web: www.taisaw.com

SAW Resonator 403.550 MHz

MODEL NO.: TC0215A

REV. NO.:5

A. FEATURES:

1. 1-Port Resonator.

B. MAXIMUM RATING:

1. Input Power Level: 0 dBm

2. DC voltage: 12 V

3. Operating Temperature: -40°C to +85°C

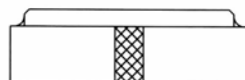
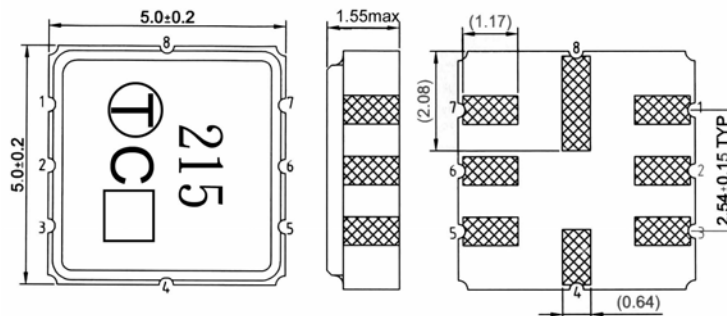
4. Storage Temperature: -40°C to +85°C

C. ELECTRICAL CHARACTERISTICS:

Characteristic	Units	Minimum	Typical	Maximum
Center frequency Fr	MHz	403.475	403.550	403.625
Insertion Loss IL	dB	-	0.5	2.0
Unloaded Quality factor, Q_U		-	14400	-
Loaded Quality factor, Q_L		-	1000	-
Frequency aging	ppm/yr			± 10
Equivalent Circuit Elements				
Motional capacitance C1	fF	-	2.2	-
Motional inductance L1	μ H	-	70.6	-
Motional resistance R1	Ohm	-	12.43	19
Parallel capacitance Co	pF	-	3.68	-
Temp. coeff.	ppm/c*2	-	0.032	-
Turnover T_o	deg.C	10	-	40
Package size		SMD 5X5X1.4mm		

RoHS Compliant
Lead free
Lead-free soldering

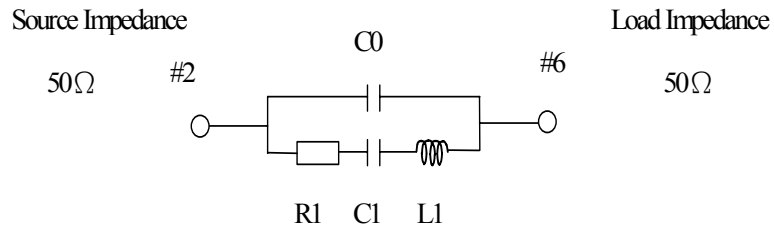
D. OUTLINE DRAWING:



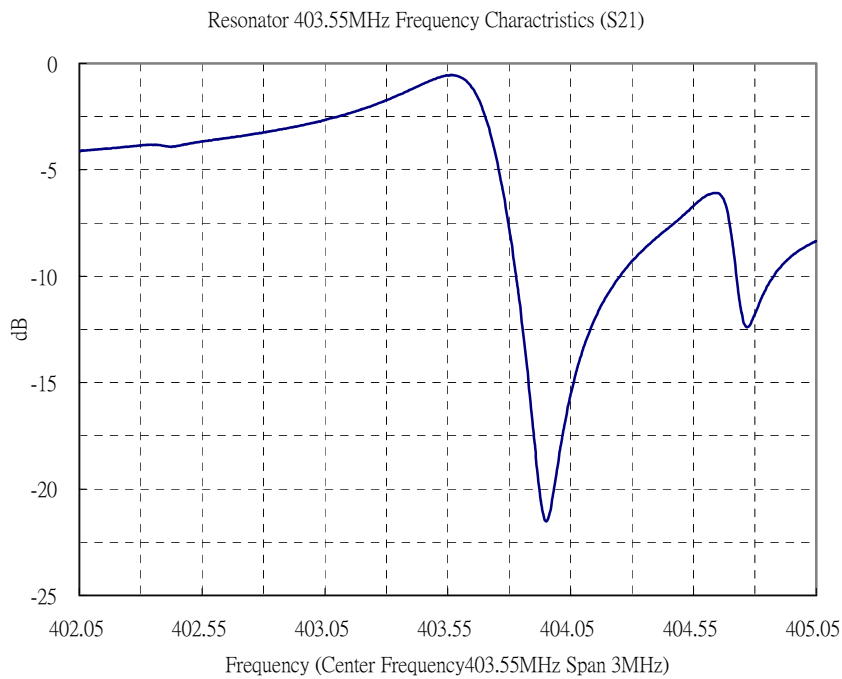
#2 : Input or Output
#6 : Output or Input
#4 · 8 : Case ground
#1 · 3 · 5 · 7 : to be ground
□ : Date code
Unit : mm

E. EQUIVALENT CIRCUIT:

One-Port Resonator:



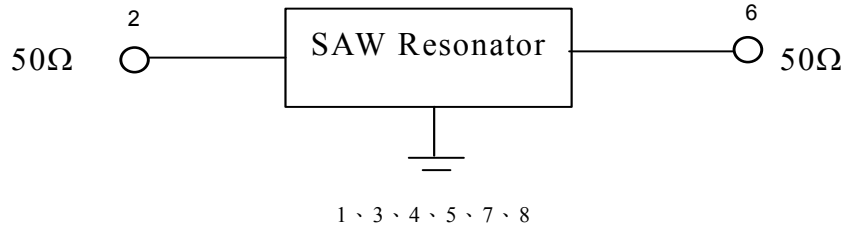
F. FREQUENCY CHARACTERISTICS:



G. TEST CIRCUIT:

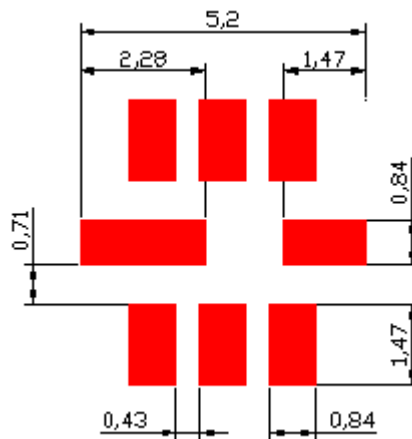
Network analyzer

From 50Ω
Network
Analyzer



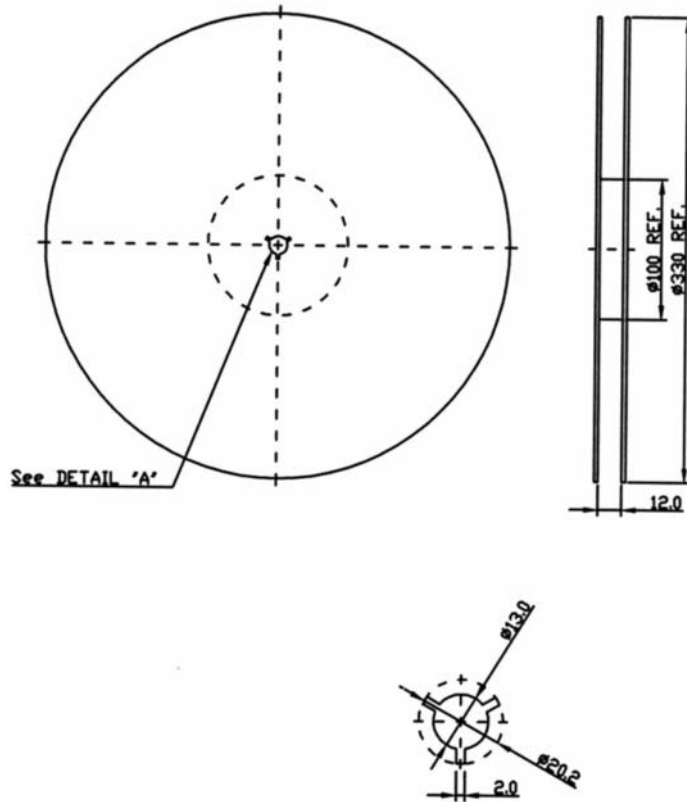
To 50Ω
Network
Analyzer

H. PCB FOOTPRINT



I. PACKING:

1. REEL DIMENSION



2. TAPE DIMENSION

